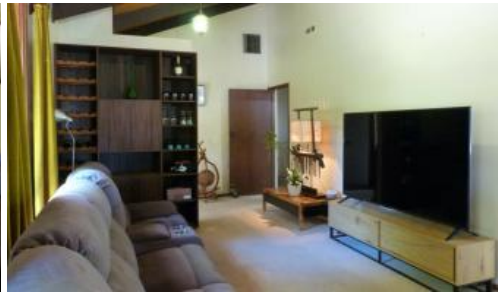


Sold



133 Clarke St, Benalla



FAMILY LIVING STARTS RIGHT HERE...

Big spacious family living starts right here.

Solid brick veneer with four bedrooms/ or three and a study, open plan lounge and dining room with cathedral ceilings.

All rooms are well proportioned, the kitchen featuring modern appliances, ample storage and terrific bench space.

A central and large spa bathroom has recently been renovated and is convenient to all bedrooms.

Excellent storage solutions throughout in the way of built in robes to three bedrooms and good linen and storage cupboards elsewhere.

Ducted gas heating and evaporative cooling add to the comfort of this home.

Secure rear yard, near new colorbond steel fencing and a 7m x 6m (approx.) shed (with good vehicle access) complete this home.

Walk to school, walk to the most popular Benalla Grocers, walk to Churchill Reserve, great location! Handy to many attractions.

🛏 4 🚿 1 🚗 2

Price SOLD for \$420,000

Property Type Residential

Property ID 1229

AGENT DETAILS

OFFICE DETAILS

Benalla

0410556531



The particulars contained herein are supplied for information only and shall not be taken as a representation in any respect on the part of the vendor or the agent. Interested parties should contact the nominated person for full and current details.

The above information provided has been furnished to us by the vendor/s. We have not verified whether or not that information is accurate and do not have any belief in one way or the other in its accuracy. We do not accept any responsibility to any person for its accuracy and do no more than pass it on. All interested parties should make and rely upon their own inquiries in order to determine whether or not this information is in fact accurate.