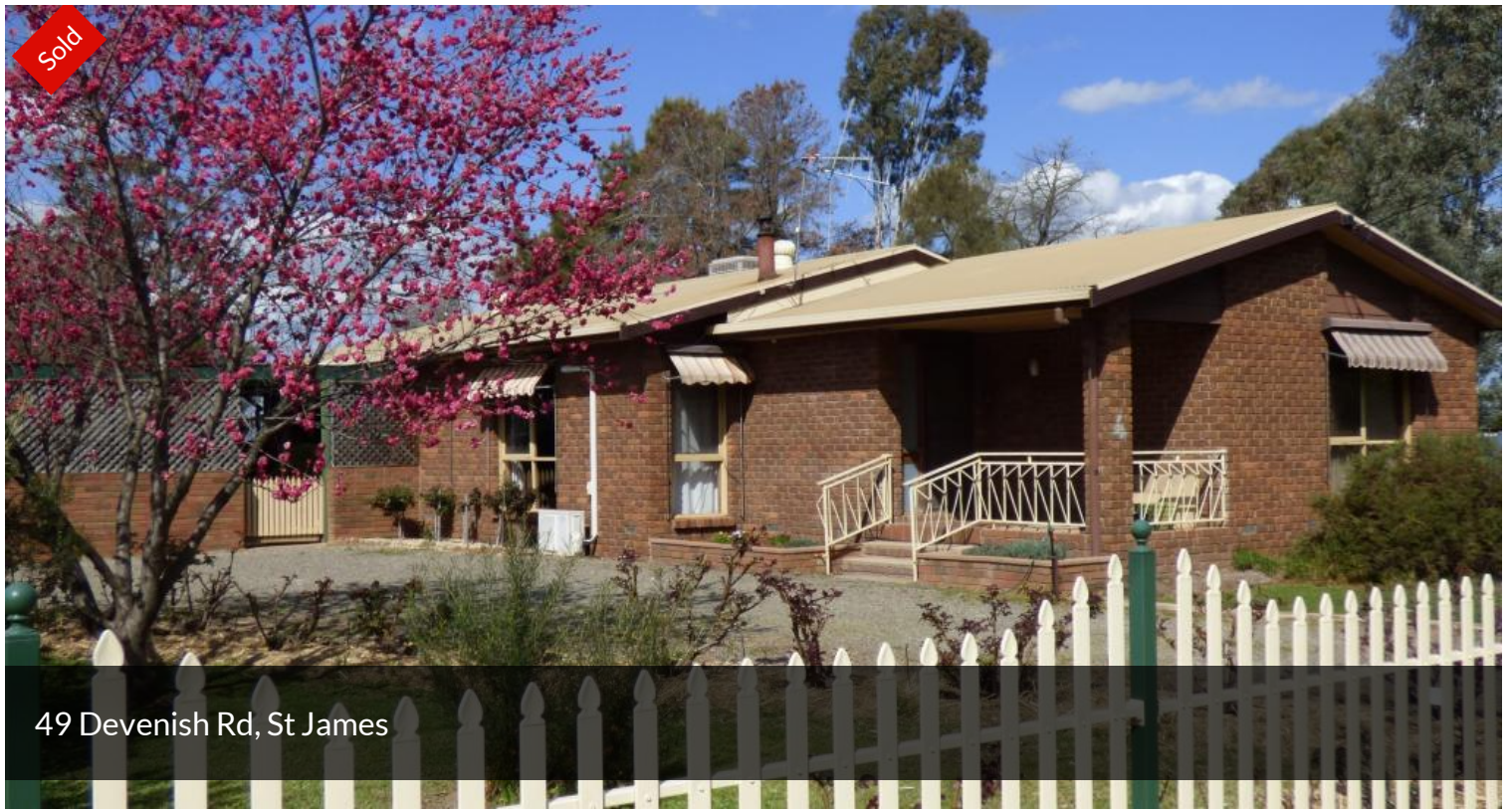


Sold



49 Devenish Rd, St James



ESCAPE TO THE COUNTRY!

Central living - so many options for work and play! Benalla 35 km, Yarrowonga 35 km, Wangaratta 49 km and Shepparton 60 km.

Sturdy and well built this brick veneer home comprises four bedrooms all with BIR'S, main with an ensuite.

Featuring a central kitchen/ dining area with near new flooring and sliding door access to a spacious undercover BBQ area.

Creature comforts include 'Coonara' wood heating, a split system and evaporative cooling.

Outdoors - ample room for caravan storage, a large double carport and enclosed lock up storage shed with power and a concrete floor.

Terrific infrastructure - Garden beds have sprinkler systems and the property offers both town and tank water (capacity 37,000 litres approx.).

With views of the beautiful golf course behind the block measures 1659m² and is well fenced.

Schooling - the closest Primary School is 5.7km away and there is a school bus servicing major towns. Silo Art!!! Well that's a must see!

🛏 4 🚿 2 🚗 2 📏 1,659 m²

Price	SOLD
Property Type	Residential
Property ID	1010
Land Area	1,659 m ²

AGENT DETAILS

OFFICE DETAILS

Benalla
0410556531

BRR Benalla Residential Rural
Real Estate

The particulars contained herein are supplied for information only and shall not be taken as a representation in any respect on the part of the vendor or the agent. Interested parties should contact the nominated person for full and current details.

The above information provided has been furnished to us by the vendor/s. We have not verified whether or not that information is accurate and do not have any belief in one way or the other in its accuracy. We do not accept any responsibility to any person for its accuracy and do no more than pass it on. All interested parties should make and rely upon their own inquiries in order to determine whether or not this information is in fact accurate.